

Panelboard Lug - Al

FIG.4

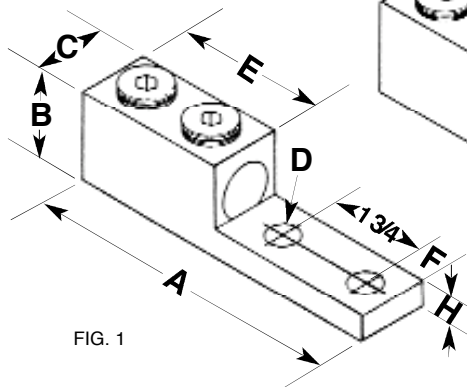
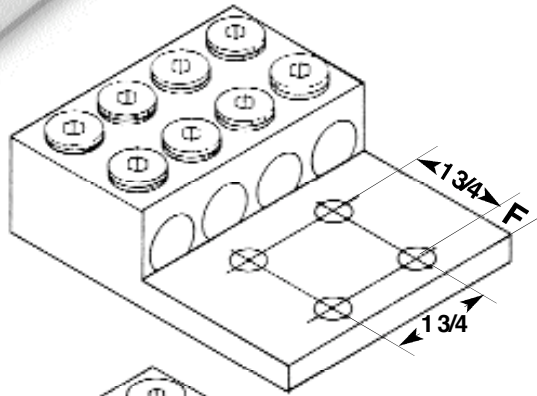


FIG. 1

FIG. 2

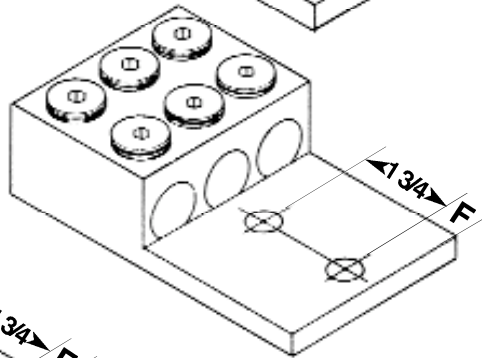
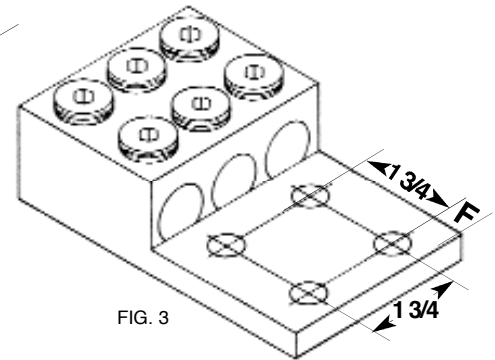


FIG. 3



CAT. NO.	FIG.	WIRE RANGE CU9AL	DIMENSIONS (INCHES)						
			A	B	C	D	E	F	H
800LL2	1	800 MCM-300 MCM	6.187	1.875	1.500	0.562	2.750	0.625	0.562
1000LL2	1	1000 MCM-500 MCM	6.187	1.875	1.625	0.562	2.750	0.625	0.562
1500LL2	1	1500-500MCM	6.625	1.975	2.000	0.562	3.475	.650	0.750
3-800LL2	2	800 MCM-300 MCM	6.187	1.875	4.250	0.562	2.750	0.625	0.562
3-1000LL2	2	1000 MCM-500 MCM	6.187	1.875	4.750	0.562	2.750	0.625	0.562
3-800LL4	3	800 MCM-300 MCM	6.187	1.875	4.250	0.562	2.750	0.625	0.562
3-1000LL4	3	1000 MCM-500 MCM	6.187	1.875	4.75	0.562	2.750	0.625	0.562
4-800LL4	4	800 MCM-300 MCM	6.187	1.875	5.656	0.562	2.750	0.625	0.562
4-1000LL4	4	1000 MCM-500 MCM	6.187	1.875	6.125	0.562	2.750	0.625	0.562

Material: High Strength, High Conductive Aluminum Alloy 6061T6

Plating: Tin Over Copper