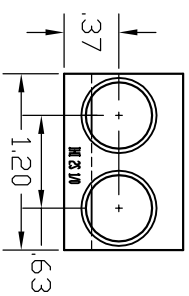
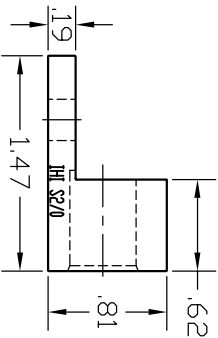
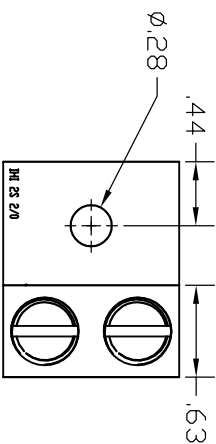


IHI 2S1/0, WIRE RANGE 1/0-14



IHI 2S2/0, WIRE RANGE 2/0-14

SCREW OPTIONS & DETAILS

- IHI S1/0 SLOTTED SCREW No.14224 .375 LONG
- IHI S1/0-HEX 3/16 HEX SCREW No. 11703 .625 LONG
- IHI S1/0-HEX-M 5mm HEX SCREW 11703-M .625 LONG
- IHI S2/0 SLOTTED SCREW No.14225 .562 LONG
- IHI S2/0-HEX 3/16 HEX SCREW No. 11703 .625 LONG
- IHI S2/0-HEX-M 5mm HEX SCREW 11703-M .625 LONG

<p>THIS DRAWING AND DESIGN ARE THE PROPERTY OF INTERNATIONAL HYDRAULICS INC., CLEVELAND, OHIO, AND MAY NOT BE REPRODUCED, COPIED, OR TRANSMITTED IN ANY FORM OR BY ANY MEANS, ELECTRONIC OR MECHANICAL, WITHOUT THE WRITTEN PERMISSION OF INTERNATIONAL HYDRAULICS INC., CLEVELAND, OHIO.</p>					
<p>ALL DIMENSIONS ARE NOMINAL AND SUBJECT TO CHANGE WITHOUT NOTICE</p>				<p>IHI CONNECTORS INTERNATIONAL HYDRAULICS, INC.</p>	
<p>TITLE 2S1/0-X & 2S2/0-X CAD LAYOUT DRAWING</p>				<p>DATE 12-1-08</p>	
<p>FINISH TIN PLATE</p>		<p>MATERIAL 6061-T6 ALUMINUM</p>		<p>SIZE DRAWN BY CDMR</p>	
<p>DATE 12-1-08</p>		<p>CHECK</p>		<p>DWG NO 2S1/0, 2/0</p>	
<p>THIS IS A CAD DRAWING. DO NOT MANUALLY REVISE</p>				<p>REV</p>	